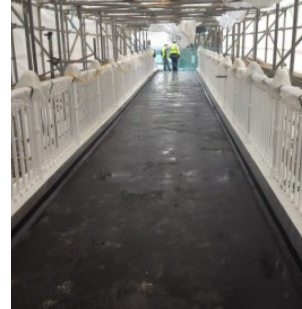


Case Study



Reigate Hill Footbridge

Location: Reigate
Completed: 21 January 2012
Client: Dean & Dyball for Surrey County Council

Duration: 6 months
Value: £72,099

The Project

Reigate hill footbridge is a listed structure spanning over the A216 leading to Reigate.

Works included:

The works included concrete testing ,concrete repairs and coatings and re-surfacing works using a sika bridge deck system.

“Metropex were helpful from the start to the finish of the project and had a can do attitude to the sub-contract works in hand”

Charles Clifford, Senior Quantity Surveyor, Balfour Beatty Regional Civil Engineering Ltd

